



Blaze Eastern Championship  
Royal Corinthian Yacht Club  
Burnham on Crouch Essex  
21st & 22nd August 2021

## SAILING INSTRUCTIONS

### 1. **Changes to Sailing Instructions**

- 1.1 Any change to the sailing instructions will be posted before 09:30 on the day it will take effect, except that any change to the schedule of races will be posted by 2000 on the day before it will take effect.
- 1.2 Any changes made afloat will be communicated orally by the RC support vessel crews.

### 2. **Code of Conduct**

- 2.1 [DP] Competitors and support persons shall comply with reasonable requests from race officials

### 3. **Signals made ashore**

- 3.1 Signals made ashore will be displayed on the Committee Vessel (Kahneeta) moored on the RCYC pontoon.
- 3.2 When flag AP is displayed ashore, “1 minute” is replaced with “not less than 30 minutes” in the race signal AP.

### 4. **Communication**

- 4.1 Notices to competitors will be posted on the event What’s App group.
- 4.2 Except in an emergency, a boat shall neither make radio transmissions while racing nor receive radio communications not available to all boats. This restriction also applies to mobile telephones.
- 4.3 The Race Committee will operate on vhf Ch72

### 5. **Safety Regulations**

- 5.1 RRS 40.1 (personal flotation devices) applies to all competitors.
- 5.2 A boat that retires from a race shall notify the race committee at the first reasonable opportunity.

### 6. **Schedule of races**

6.1 Registration will take place in the boat shed at the RCYC on Saturday August 21st @ 08:45 – 09:30

6.2 Competitor briefing will be held at 10:30 in the RCYC boat shed

6.3 Race dates & times:

August 21st

Race 1: 12.25pm Warning signal

Race 2: as soon as possible after Race 1

Race 3: as soon as possible after Race 2

August 22nd

Race 4: 10.25am Warning signal

Race 5: as soon as possible after Race 4

Race 6: as soon as possible after Race 5

6.4 No warning signal will be made after 16:00

## 7. Courses

7.1 Course is as described in Attachment 1 and will be communicated by displaying a board of the appropriate colour (Red, Green or Yellow) on the stern of the Committee Boat.

## 8. Marks

8.1 As described in Attachment 1

## 9. Class flags

9.1 Class flag will be **B**

## 10. The Start

10.1 Races will be started using RRS 26 with the warning signal made **5** minutes before the starting signal.

10.2 The starting line will be between the mast displaying an Orange flag on the main committee vessel at the starboard end the line and course side of the starting mark at the port end of the line.

10.3 A boat starting later than 5 minutes after her starting signal will be scored Did Not Start without a hearing. This changes rule A4 and A5.

## 11. Target Times

11.1 The target time for each race will be 40 minutes. A race may also be shortened to finish earlier using RRS 32.

11.2 Boats failing to finish within 15 minutes after the first boat sails the course and finishes will be scored Did Not Finish without a hearing. This changes rules 35, A4 and A5.

## 12. The Finish

12.1 The finishing line will be the start line

## 13. Hearing Requests

- 13.1 Protest forms are available to be downloaded from the RCYC website or on request from the Committee Vessel. Protests and requests for redress or reopening shall be delivered to the Race Officer within the appropriate time limit.
- 13.2 The protest time limit is 30 minutes after the last boat has finished the last race of the day or 30 minutes after the race committee signals no more racing today, whichever is later.
- 13.3 Notices will be posted no later than 30 minutes after the protest time limit to inform competitors of hearings in which they are parties or named as witnesses. Hearings will be held in the boat shed.
- 14. **Scoring**
- 14.1 The low point scoring system will apply.
- 14.2 2 races are required to be completed to constitute a series.
- 14.3 When fewer than 4 races have been completed, a boat's series score will be the total of her race scores.
- 14.4 When 4 races have been completed, a boat's series score will be the total of her scores excluding her worst score.

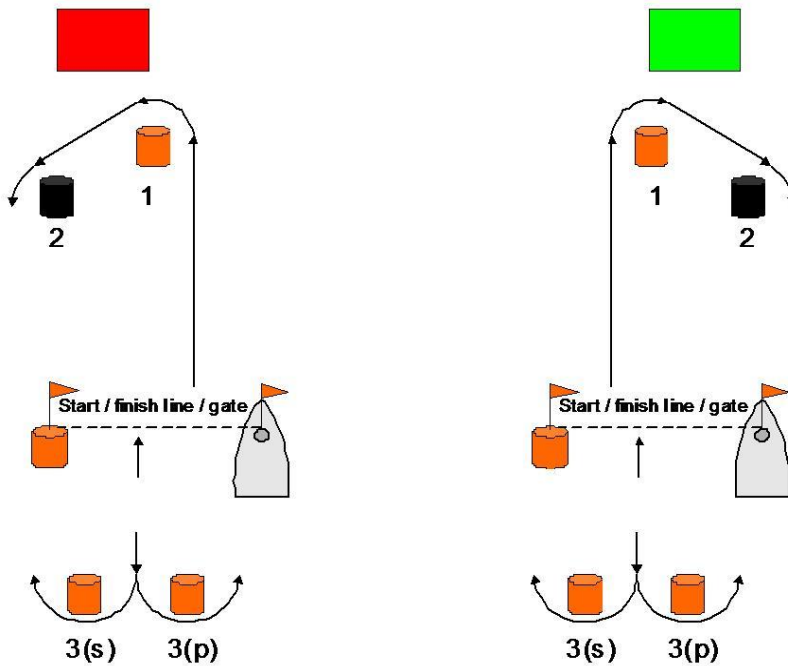
## **Attachment 1**



Royal Corinthian Yacht Club

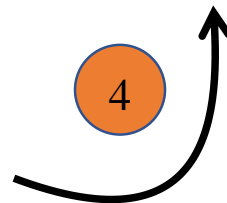
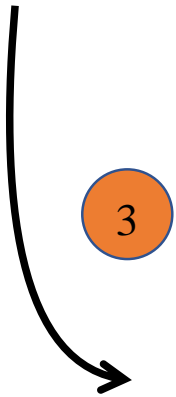
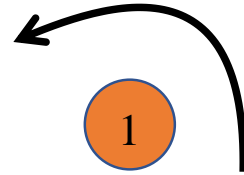
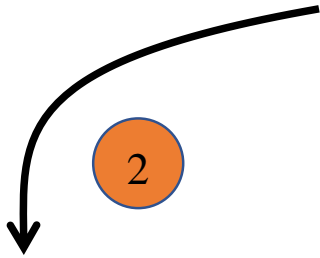
### WINDWARD - LEEWARD COURSE

The course for each lap after starting is Mark 1, Mark 2, Mark 3 (gate), Start/Finish line (gate). There is no fixed number of laps. The race will be finished without any further signal on a windward leg when the leading boat passes through the Start / Finish line Gate for the first time after the race has been in progress for the time displayed on a white board on the committee boat. The race may also be shortened earlier using rule 32. A red board on the committee boat means 'leave marks 1 and 2 to port'. A green board on the committee boat means 'leave marks 1 and 2 to starboard'.



Marks 1 and 3 are orange cylinders. Mark 2 is a black cylinder. The pin mark is an orange cylinder with an orange flag. It may also be a race committee vessel displaying an orange flag, in which case the starting and finishing lines are to the mast or staff displaying the orange flag.

Trapezoid course 



**LAP**  
**START 1P 2P 3P 4P GATE**