



Super Saturdays 2019

Royal Corinthian Yacht Club

Burnham on Crouch, Essex, England

SAILING INSTRUCTIONS

1 RULES

- 1.1 The series will be governed by the rules as defined in *The Racing Rules of Sailing 2017 - 2020* (RRS)
- 1.2 Crouch Harbour Authority byelaws will apply.
- 1.3 Competitors automatically grant to the organising authority without payment the rights in perpetuity to make, use and show any motion pictures and live recorded or filmed television of, or relating to this event.
- 1.4 Competitors should note that the RCYC implement the RYA Racing Charter.

2 NOTICES TO COMPETITORS

- 2.1 Notices to competitors will be posted on the official notice board(s) located in the main Clubhouse

3 CHANGES TO SAILING INSTRUCTIONS

- 3.1 Any change to the sailing instructions will be posted before 0900 on the day it will take effect, except that any change to the schedule of races will be posted by 2000 on the day before it will take effect.

4 SIGNALS MADE ASHORE

- 4.1 Signals made ashore will be displayed at the racing flag staff of the Royal Corinthian Yacht Club.

5 SCHEDULE OF RACES

- 5.1 Dates of racing: April 20, May 18, June 15, July 6, August 17, September 14
Competitor Briefing: 09:00 - RCYC Ground floor
First Race of the Day: 10.30 - first signal.
Second Race: As soon as possible after First Race of the Day

- 5.2 Number of races in series: 12

- 5.3 The order and composition of starts are as follows:

	Start numeral	Class	Boat Type
Start 1	3	Fast Handicap	PY2107 or below
Start 2	6	Slow handicap	Cadet, Feva, Topper
Start 3	9	Optimist	Optimist
Start 4	3	General Recall	ALL recalled classes



6 CLASS FLAGS

N/A

7 RACING AREAS

7.1 Racing shall take place in the rivers Crouch and or Roach

8 THE COURSES

8.1 The course to be sailed will be indicated by the numeral pennant displayed on the Race Committee boat at the first warning signal of the race.

8.2 **Course 1:** Triangle Sausage course (as the attached sheet below). A lap shall comprise of a triangle and a sausage passing through the upwind gate on all upwind legs.

OR

Course 2: Trapezoid (as the attached sheet below).

8.3 The Race Committee boat will be stationed upwind of the leeward mark and will remain in this position for the duration of the race.

8.4 All Boats must pass through the 'Upwind Gate' formed by the Race Committee boat and the starting mark on each and every upwind leg. If a boat fails to pass through the gate, that lap will not count towards the race result.

9 MARKS

9.1 Mark 1, 2, 3, 4 orange buoys.

9.2 The starting marks will be the Race Committee boat mast bearing an Orange flag and a buoy displaying an Orange Flag

9.3 The 'Upwind Gate' will be formed by the Race Committee boat and the starting mark.

9.4 The finishing marks will be the Race Committee boat mast bearing an Orange flag and a buoy displaying an Orange Flag

10 THE START

10.1 Races will be started by displaying number boards with classes starting at **3** minute intervals. This modifies RRS26. Details of the start sequence and signals are shown below.

10.2 To alert boats that racing will begin soon, an Orange flag will be displayed on the mast of the Race Committee boat with multiple sounds signals at least one minute before a warning signal is made.

10.3 The starting line shall be between the mast bearing and Orange flag aboard the Race Committee boat and a buoy displaying an Orange Flag.

10.4 Boats whose warning signal has not been made shall keep clear of the starting area and of all boats whose warning signal has been made.

10.5 A boat that has not started **2** minutes after her starting signal will be scored Did Not Start (DNS) without a hearing. This changes RRS A4.

10.6 Individual recalls will be signalled by displaying Flag X with one sound in accordance with RRS 29.1, except that the flag shall be removed no later than one minute after the starting signal.

10.7 A General Recall will be signalled by displaying the "First Substitute" (with two sounds) for a period of one minute. A recalled start shall start 3 minutes after the last scheduled start of that race - this modifies RRS 29.2.



- 10.8 RRS30.3 will apply to all recalled starts except that the U flag shall not be displayed.
- 10.9 In the event of more than one start in the sequence has been recalled ALL recalled classes will start 3 minutes after the last scheduled start of that race.
- 10.10 In the event of a General Recall on a previously recalled start, the restart will be 3 minutes after the previous recalled start using the numeral display of start 4. This modifies RRS 29.2
- 10.11 In the event of a postponement after the Preparatory Signal, by displaying pennant AP (with one sound), the numeral board shall be removed for re-use. The sequence will be restarted one minute after the removal of the AP by redisplaying the numeral board. This modifies the interpretation of Race Signal AP in RRS.
- 11 CHANGE OF THE NEXT LEG OF THE COURSE**
- 11.1 To change the next leg of the course, the Race Committee will move the original mark (or the finishing line) to a new position.
- 12 THE FINISH**
- 12.1 After approximately 40 minutes (or at the Race Officer's discretion) Flag 'S' will be displayed plus two sounds signals which will signify that the race is to be finished.
- 12.2 Each boat will be finished as it passes through the 'upwind gate' to complete the lap that it is sailing when the race is shortened.
- 12.3 The finishing line shall be between the mast bearing an Orange flag aboard the Race Committee boat and a buoy displaying an Orange Flag.
- 12.4 After finishing, boats shall keep clear of the finishing gate and all boats that are continuing to race.
- 13 PENALTY SYSTEM**
- 13.1 RRS 44.1 and 44.2 apply.
- 13.2 Boats which fail to start or finish correctly or to sail the course as set and thus fail to comply with RRS28 may be disqualified without protest or a hearing, except that boats that fail to pass through the upwind gate (see S.I. 8.3) will not be disqualified but will be credited only with the number of laps they have sailed correctly. The Race Committee shall record the finishing time as well as noting the disqualification.
- 14 TIME LIMITS**
- 14.1 The target time for each race is 40 mins.
- 14.2 Boats failing to finish the same number of laps or fewer within 10 minutes after the first boat (in their Handicap Group) sails the course and finishes will be scored Did Not Finish. This changes rules 35, A4 and A5
- 15 PROTESTS AND REQUESTS FOR REDRESS**
- 15.1 Protests shall be in accordance with RRS 60, except that the intention to protest shall be communicated to the Race Committee on the Race Committee boat, within 10 minutes of finishing that race. Protest forms are available at the RCYC office, where the completed forms shall be handed in within one hour of the last boat coming ashore
- 16 SCORING**
- 16.1 **8** races are required to be completed to constitute a series.
- 16.2 When 5 races have been completed, a boat's series score will be the total of her race scores excluding her one worst score. When 10 races have been completed , a boat's series score will be the total of her race scores excluding her two worst scores.
- 16.3 A boat will be scored according to her average lap time which will be calculated as:
 Total Elapsed Time x handicap



No. laps completed

17 SAFETY REGULATIONS

- 17.1 A boat that retires from a race shall notify the Race Committee as soon as possible.
- 17.2 All boats prior to the first Signal shall pass close by the stern of the Race Committee boat for identification.

18 EQUIPMENT AND MEASUREMENT CHECKS

- 18.1 A boat or equipment may be inspected at any time for compliance with the class rules and sailing instructions. On the water, a boat can be instructed by a Race Committee measurer to proceed immediately to a designated area for inspection.

19 OFFICIAL BOATS

- 19.1 Official boats will be marked as follows: RCYC Blue Ensign.

20 RADIO COMMUNICATION

- 20.1 A boat shall neither make radio transmissions while racing nor receive radio communications unless to the Race Management Vessel, Ch72. This restriction also applies to mobile telephones. Mobile telephones may be taken on board for emergency.

21 Risk Statement

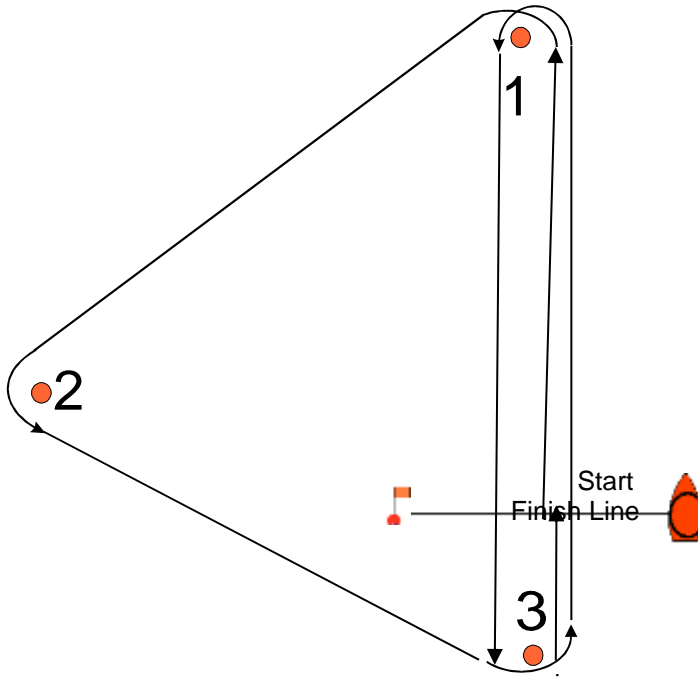
- 21.1 Rule 4 of the Racing Rules of Sailing states: "The responsibility for a boat's decision to participate in a race or to continue racing is hers alone."
Sailing is by its nature an unpredictable sport and therefore inherently involves an element of risk. By taking part in the event, each competitor agrees and acknowledges that:
- (a) They are aware of the inherent element of risk involved in the sport and accept responsibility for the exposure of themselves, their crew and their boat to such inherent risk whilst taking part in the event;
 - (b) They are responsible for the safety of themselves, their crew, their boat and their other property whether afloat or ashore;
 - (c) They accept responsibility for any injury, damage or loss to the extent caused by their own actions or omissions;
 - (d) Their boat is in good order, equipped to sail in the event and they are fit to participate;
 - (e) The provision of a race management team, patrol boat and other officials and volunteers by the event organiser does not relieve them of their own responsibilities;
 - (f) The provision of patrol boat cover is limited to such assistance, particularly in extreme weather conditions, as can be practically provided in the circumstances;

22 INSURANCE

- 22.1 Each participating boat shall be insured with valid third-party liability insurance with a minimum cover of Three million sterling.



Course 1: Triangle Sausage



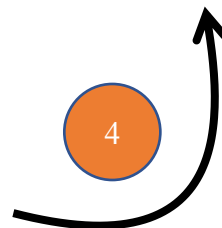
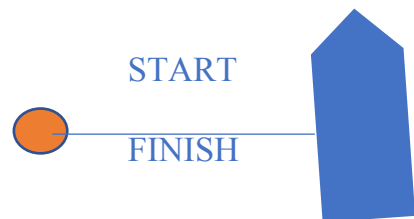
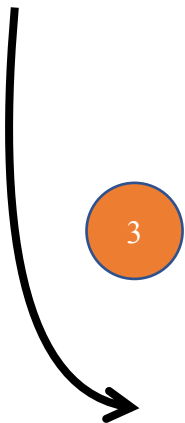
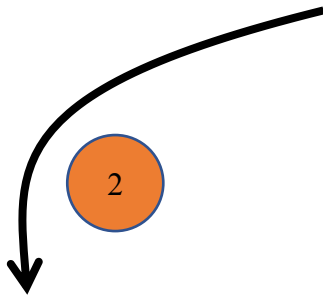
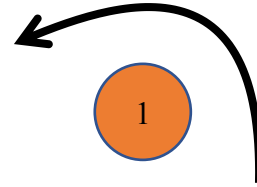
1 lap shall be a Triangle & Sausage

1 (P), 2 (P), 3 (P), Gate, 1 (P), 3 (P), Gate

Course shall be repeated until 'S' flag is displayed



Course 2: Trapezoid



LAP
START 1P 2P 3P 4P GATE



Start Sequences using numeral boards

Display	Start							
	1		2		3		4	
	Means	Time to Start (min)	Means	Time to Start (min)	Means	Time to Start (min)	Means	Time to Start (min)
0	Warning Signal	3						
1	Preparatory Signal	2						
2	One minute	1						
3	Start Fast h'cap	0	Warning Signal	3				
4			Preparatory Signal	2				
5			One minute	1				
6			Start Slow h'cap	0	Warning Signal	3		
7					Preparatory Signal	2		
8					One minute	1		
9					Start Optimist	0	Warning Signal	3
10							Preparatory Signal	2
1							One minute	1
2							Recalled Start	0